

Application Group

Grey Fabric Scan Results

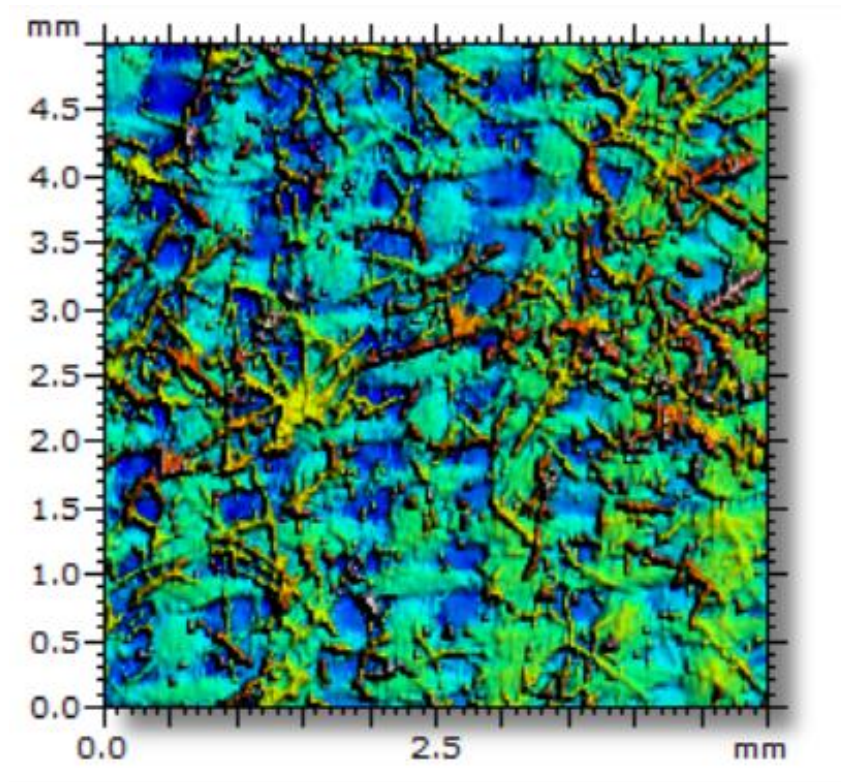
11/6/2015

General

We scanned a gray fabric using Conopoint -10HD with 25mm. From the scanning results it is clear that all the fabric structure is measurable. There are areas for which the structure is not visible because of the tiny straps of hair covering the fabric interlace structure

General Results

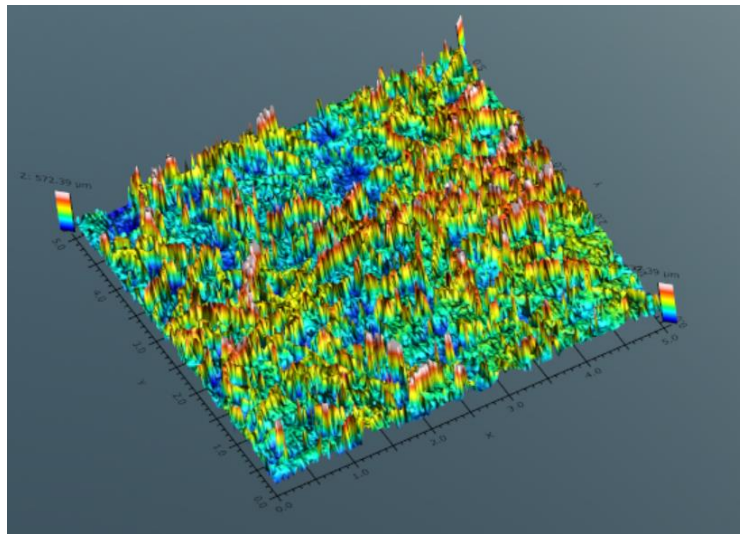
The 3D scan is shown below:



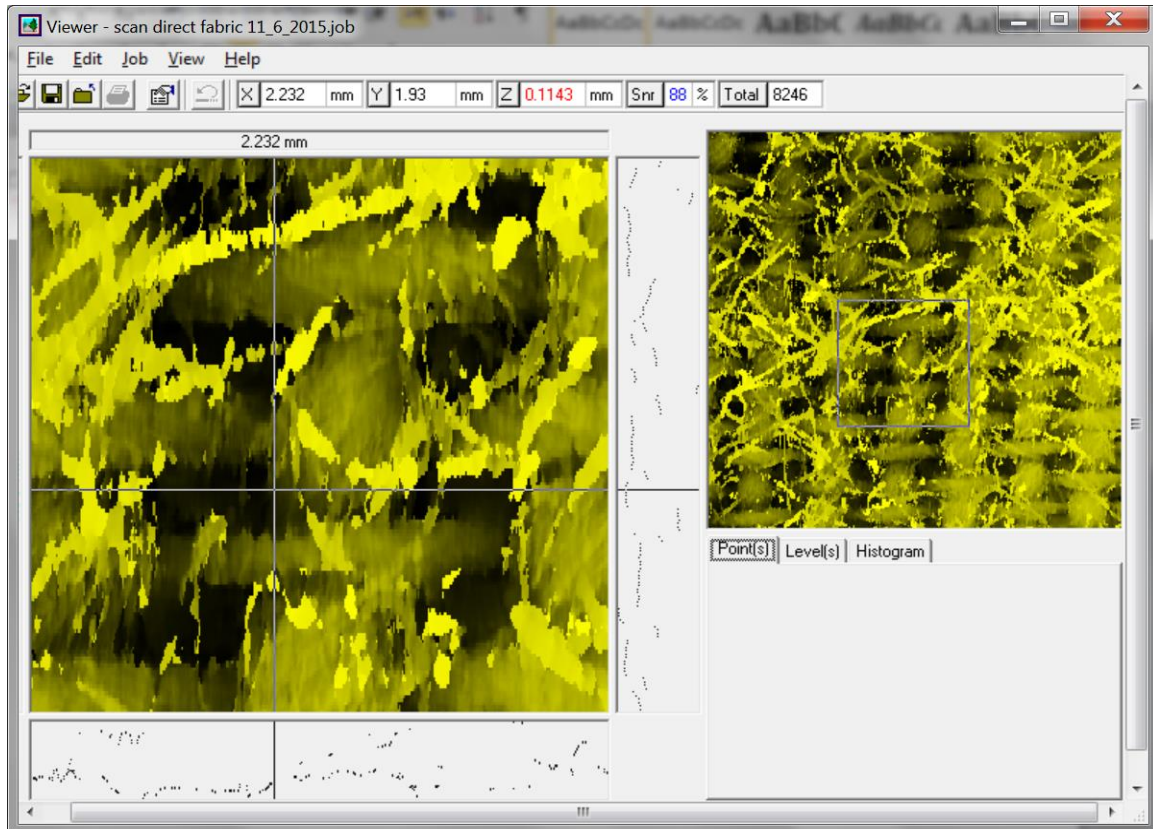
From the above image one can see the basic interlace structure of the fabric with the thin fabric hair covering it.

An isometrical image shows it clearly;

Application Group

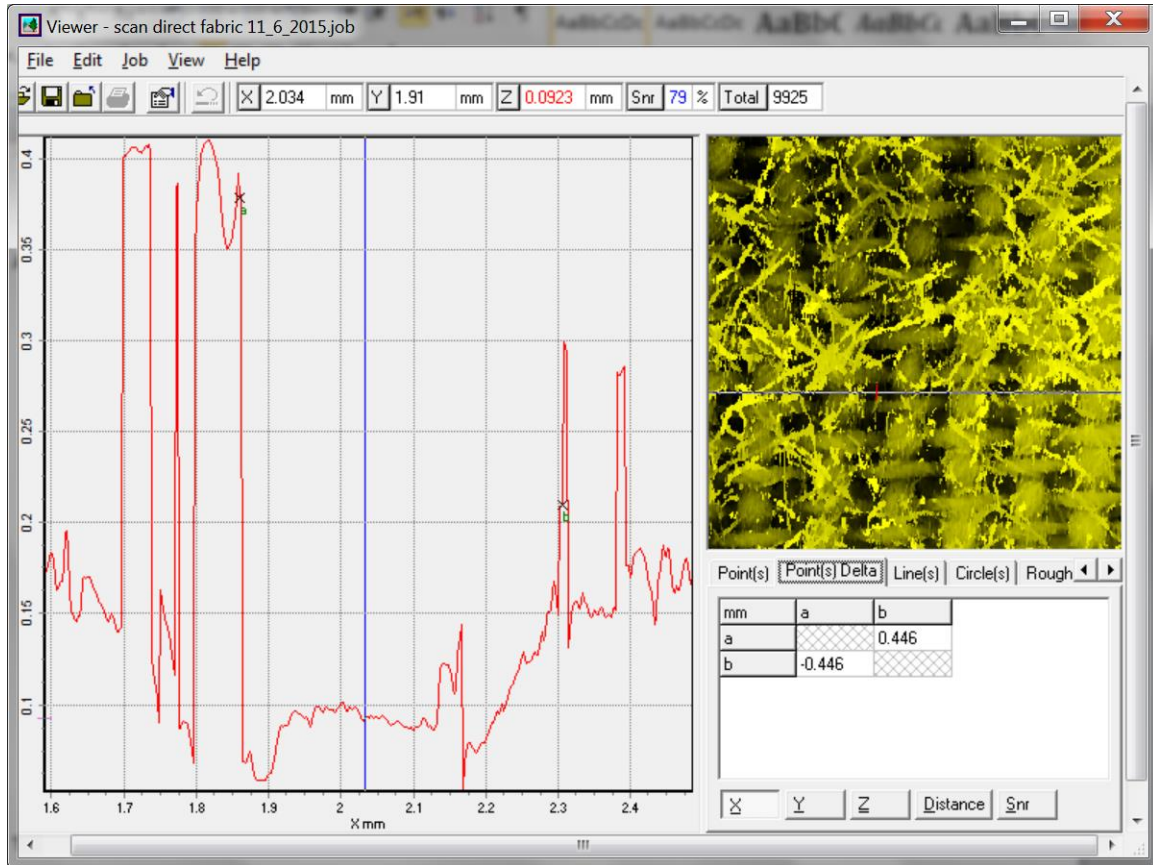


Another presentation of the 3D scan is shown below:



Application Group

A line cross section in the X direction is shown below:



The width of a randomly picked hole in the X direction is around 446um (points a-b)